

PSV – platform supply vessel EDT Hercules



Project:
EDT Hercules - platform supply vessel

Project owner:
EDT Offshore

Fast SA scope of work:
Surface protection, insulation, interiors,&furniture

Project Manager FAST SA:
Paweł Licbarski
pawel.licbarski@fast.pl



EDT Hercules - platform supply vessel

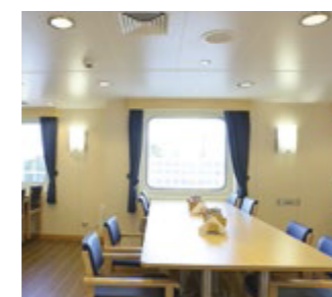
EDT Hercules is PSV - platform supply vessel adapted also for underwater operations – realized for the request of EDT Offshore. The scope of work included ship conversion and modernisation, containing surface protection, insulation, outfitting elements delivery and installation in cabins, community areas, galley and cold store – stainless

steel furniture. A big challenge was adjusting furnishing elements to existing conditions and closing the project in short term. The vessel was adapted for work and living for 50-people crew, providing both work comfort and rest in leisure areas – gym and sauna. Materials and technologies used enable operation even in very tough weather

conditions, including arctic areas. In 2011 we performed the works on twin vessel EDT Jane with exactly the same job scope. Technical specification of both vehicles: overall length of 88,00 m, moulded beam of 18,00 m and maximum draft of 5,70 m. The deadweight of the PSVs is 4 540 DWT and the gross tonnage is 4 964 GRT.



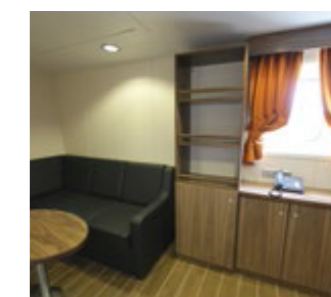
Paweł Licbarski
pawel.licbarski@fast.pl



Mess room



Galley



Cabin



Public spaces – leisure area