

Passenger-vehicle ferry Loch Seafort



Passanger-vehicle ferry with overall length 116 m

Loch Seafort is passenger-vehicle ferry built by Flensburger Schiffbau-Gesellschaft mbH for the request of C-MAL (Caledonian McBryne) – the Scottish owner operating ferry routes in north Great Britain. This is successive prototype ship implemented in coordination with Flensburg shipyard. A vessel of 118 m length overall and 19,2 of width may take on board 700

passengers and 145 vehicles. As a partner of FSG we performed the surface protection, insulation and outfitting the superstructure and crew section located on 6th and 7th deck and technical rooms such as wheelhouse, engine control room and its office. Due to modern construction and highest class solutions, the ferry will be able to operate constantly and will replace

two previous vessels. Loch Seafort is more reliable in bad weather and materials used provide high exploitative durability. The project was implemented parallel to the other prototype vessel what required specific flexibility and coordination, however our project management system once again allowed us to complete both ships successfully.



Paweł Licbarski
pawel.licbarski@fast.pl

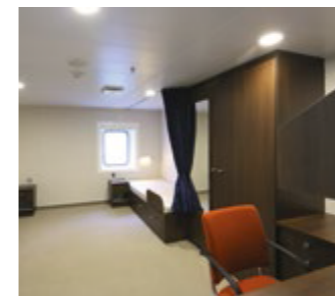
Project:
Loch Seafort
– passenger-vehicle ferry

Project owner:
C-MAL (Caledonian McBryne)

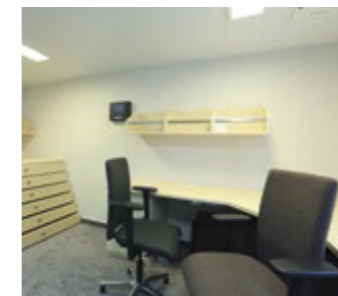
General contractor:
FSG Shipyard, Flensburg

Fast SA scope of work:
Surface protection, Insulation,
Interiors&Furniture

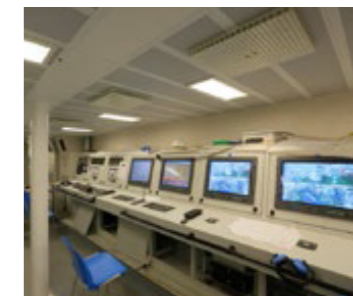
Fast SA Project Manager:
Paweł Licbarski
pawel.licbarski@fast.pl



Passanger cabin



Office



Engine control room



Insulation